

PRIME RESIDENTIAL  
REAL ESTATE



**JoAnne Doyle**  
084 200 1703  
joanne.doyle@ennikestates.co.za

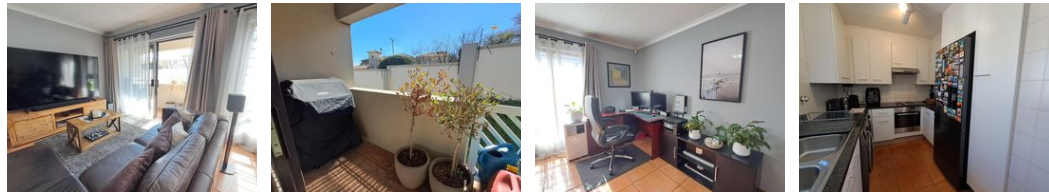
Contact Johannesburg (Ennik Estates)

011 788 0688

65 Worcester Road  
Parkwood  
2193  
Johannesburg




Web Ref EN01-4514



**R11,000 pm**

Lease Period None    Availability    Deposit -    Annual Escalation -  
Lease Excludes:  
Electricity ,Water

 2     1.5

### Spacious 2 bedroom apartment to rent in Hyde Park

Located in a more private area, this 2-bed apartment is on the top level (only two levels) so no units above – in a complex is well maintained, secure and has easy access to Sandton, Hyde Park, Craighall and Randburg.

The living areas are tiled: open plan dining / living area with access to a private covered balcony.

The kitchen has lots of built-in cupboards, space for two appliances and for a large fridge.

The sun-filled main bedroom is truly spacious (currently has a king size bed in it) and plenty of built-in cupboards.

Second bedroom is roomy for its size, accommodating at least a double bed. Also has built-in cupboards.

Both bedrooms are carpeted.

Bathroom, and separate toilet.

2 parking bays, plus visitor parkings.

Communal swimming pool with

### Features

#### Interior

Bedrooms 2  
Bathrooms 1.5  
Recep. Rooms 2  
Furnished No

#### Exterior

Carports / Parkings 2  
Security Yes  
Pool No  
Views No

#### Sizes

Floor Size 72m<sup>2</sup>

#### Extras

Wifi/Fibre, Open-Plan Lounge, Open-Plan Dining Room

