

PRIME RESIDENTIAL  
REAL ESTATE

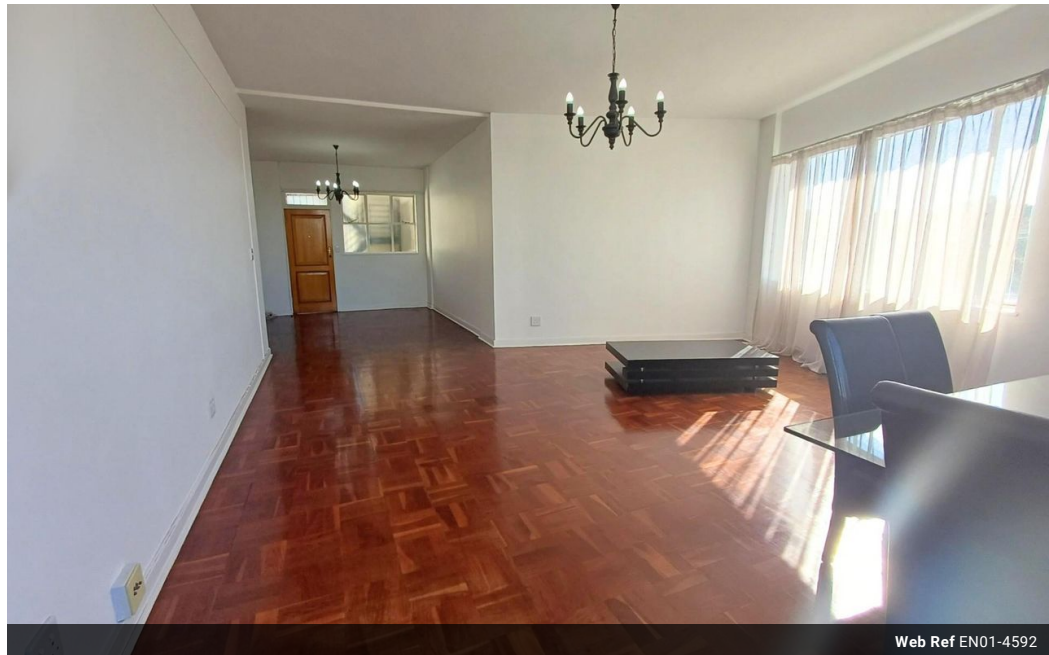
**JoAnne Doyle**

084 200 1703

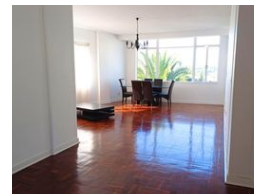
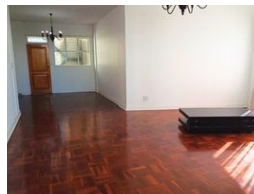
joanne.doyle@ennikestates.co.za

Contact Johannesburg (Ennik Estates)

011 788 0688

65 Worcester Road  
Parkwood  
2193  
Johannesburg


Web Ref EN01-4592



R13,750 pm

Lease Period None  
Lease Excludes:  
Electricity ,Water

Availability None

Deposit -

Annual Escalation -



2



2

## Lovely, Large 2 Bedroom Apartment in Melrose

Parquet floored, spacious apartment in smaller building with a communal garden.

This spacious unit has a lovely, sunny balcony.

A large living area (with direct access to the balcony)

The kitchen has plenty of cupboard space (with a back door).

The two bedrooms are spacious with built-in cupboards (one of the bedrooms has direct access to the balcony).

2nd bathroom

Secure undercover parking

Rent excludes utilities (electricity and water)

Building is fibre ready

## Features

**Pets Allowed** Yes

**Interior**

Bedrooms 2  
Bathrooms 2  
Recep. Rooms 1  
Furnished No

**Exterior**

Carports / Parkings 2  
Security Yes  
Pool No  
Views No

**Sizes**

Floor Size 114m²

**Extras**

WiFi / Fibre

