

PRIME RESIDENTIAL REAL ESTATE



JoAnne Doyle
084 200 1703
joanne.doyle@ennikestates.co.za

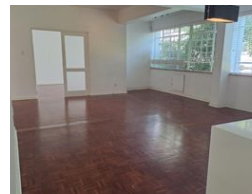
Contact Johannesburg (Ennik
Estates)

011 788 0688

65 Worcester Road
Parkwood
2193
Johannesburg



Web Ref EN01-4454



R13,000 pm

Lease Period None **Availability** None **Deposit** - **Annual Escalation** -
Lease Excludes:
Electricity ,Water

 2  2

Spacious 2 bed-apartment in popular Birdhaven.

Open plan living area served by a modern and renovated kitchen.

The main bedroom is more than spacious with built-in cupboards, with a modern en-suite bathroom.

The 2nd bedroom is bright and also with built-in cupboards.

One secure onsite parking bay.

There is 24-hour security, a lift and a lovely communal garden.

Solar power / back up.

Partial water back up – to be clarified

The location is excellent and is close to:
The M1Highway
Rosebank
Sandton

Features

Interior

Bedrooms	2
Bathrooms	2
Recep. Rooms	2
Furnished	No

Extras

WiFi / Fibre, Solar

Exterior

Carports / Parkings	1
Security	Yes
Pool	No
Views	No

Sizes

Floor Size	115m²
------------	-------