

PRIME RESIDENTIAL
REAL ESTATE

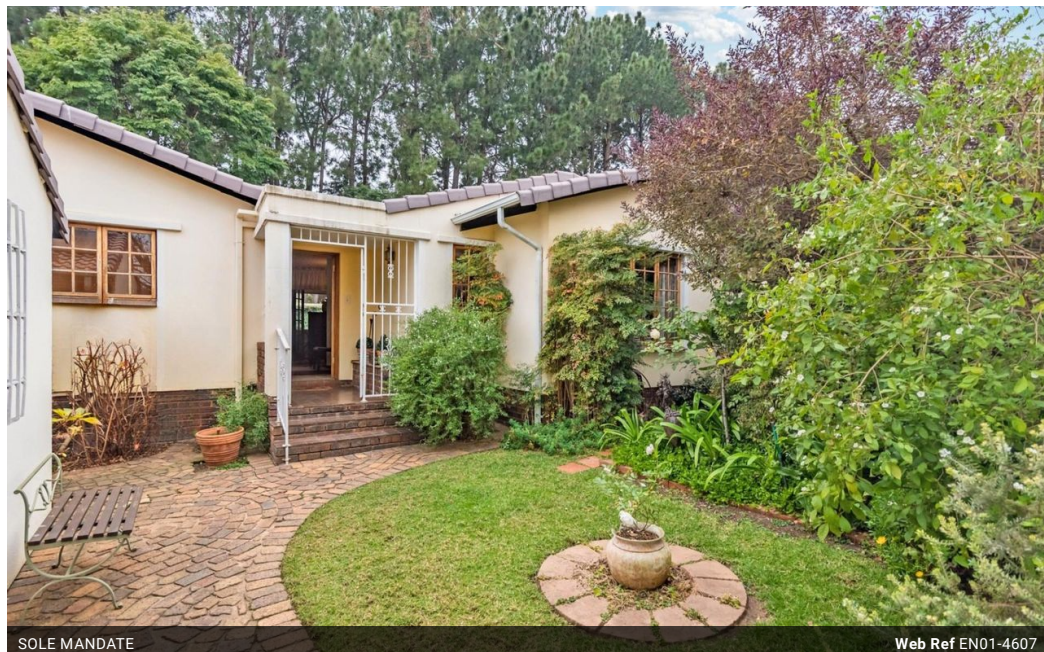


Bev Short
081 270 7196
bev.short@ennikestates.co.za

Contact Johannesburg (Ennik
Estates)

011 788 0688

65 Worcester Road
Parkwood
2193
Johannesburg



SOLE MANDATE

Web Ref EN01-4607



R2,490,000

Monthly Bond Repayment R25,279.20

Calculated over 20 years at 10.75% with no deposit.

Transfer Costs R114,920.00 **Bond Costs** R38,415.00

These calculations are only a guide. Please ask your conveyancer for exact calculations.

Monthly Levy R450 **Monthly Rates** R2,100

3 2 2

Exciting Opportunity Knocks

Calling everyone looking to scale down or young families looking for a happy home to create memories and watch your dreams unfold. Add to this the secure, tranquil environment with a park a few steps up the road, ideal for your young ones and four-legged friends to romp and play in.

You're welcomed into the entrance of this charming home, leading directly to the well-sized lounge, offering a combustion wood-burning fire. The double doors lead directly onto the family dining and lounging area. The delightful family area flows seamlessly into the attractive garden, through foldback doors, opening the entire area into delightful indoor/outdoor living. Ideal for entertaining or just relaxing with a good book.

The chef's dream, black and white kitchen boasts stone work surfaces, a pantry and butcher's block...

Features

| Pets Allowed | | Yes | | | |
|--------------|----|-----|--|------------|-------------------|
| Interior | | | | Exterior | |
| Bedrooms | 3 | | | Garages | 2 |
| Bathrooms | 2 | | | Security | Yes |
| Recep. Rooms | 2 | | | Pool | No |
| Furnished | No | | | Views | No |
| | | | | Sizes | |
| | | | | Floor Size | 190m ² |
| | | | | Land Size | 464m ² |

Extras

Glass Hob, 6x Solar Panels, 5kwh Inverter, Enclosed Verandah, Staff Toilet, Manned Boom-Gate

