

PRIME RESIDENTIAL REAL ESTATE



Bev Short
081 270 7196
bev.short@ennikestates.co.za

Contact Johannesburg (Ennik
Estates)

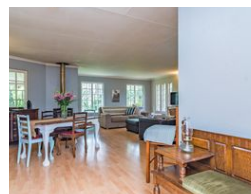
011 788 0688

65 Worcester Road
Parkwood
2193
Johannesburg



SOLE MANDATE

Web Ref EN01-4590



R2,590,000

3 2 2

Monthly Bond Repayment R26,294.43

Calculated over 20 years at 10.75% with no deposit.

Transfer Costs R122,920.00 **Bond Costs** R38,415.00

These calculations are only a guide. Please ask your conveyancer for exact calculations.

Monthly Levy R450

Charming Home

This charming home boasts 3 bedrooms, the master offers an en-suite bathroom with a private dressing area and a walk-in cupboard.

On entering the neat, comfortable home, you are welcomed into the open-plan entrance, lounge, and dining room. This opens onto the large covered patio overlooking a lovely, manageable garden. Ideal for the little ones to fantasise in their magical corners, and a pleasant outlook, for entertaining guests, or just chilling as a family. The fabulous combustion stove in the lounge heats the entire home throughout our chilly Highveld winters.

The functional kitchen offers melamine cupboards, a very useful pantry and a gas stove.

To add to your convenience and comfort, it boasts a double carport and a double garage leading directly into the back garden, housing a tool store,...

Features

Pets Allowed Yes

Interior

Bedrooms	3
Bathrooms	2
Recep. Rooms	2
Furnished	No

Exterior

Garages	2
Carports / Parkings	2
Security	Yes
Pool	No
Views	No

Sizes

Floor Size	200m ²
Land Size	494m ²

Extras

Open-Plan Lounge, WiFi/Fibre, 2x Rainwater Tanks, Large Patio, Closed Combustion Fireplace

