

PRIME RESIDENTIAL REAL ESTATE

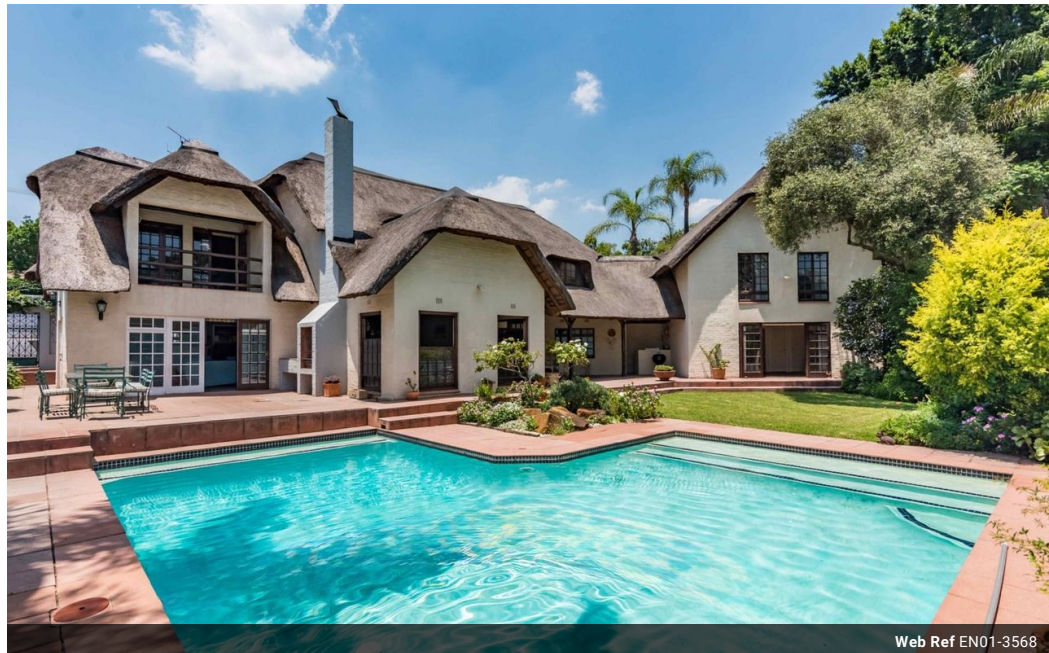


Bev Short
081 270 7196
bev.short@ennikestates.co.za

Contact Johannesburg (Ennik
Estates)

011 788 0688

65 Worcester Road
Parkwood
2193
Johannesburg



Web Ref EN01-3568



R3,900,000

 5
  3.5
  3

Monthly Bond Repayment R39,593.93

Calculated over 20 years at 10.75% with no deposit.

Transfer Costs R270,050.00 **Bond Costs** R51,610.00

These calculations are only a guide. Please ask your conveyancer for exact calculations.

Monthly Levy R400 **Monthly Rates** R3,635

Elegant Living!

A thatched home filled with spacious style and charm, situated in a manageable garden, boasting the convenience of a securely guarded boom and central location.

The gracious entrance flows seamlessly through the reception rooms and onto the well-appointed entertainer's patio. Sash windows in the formal lounge add to the feel of indoor-outdoor living. This is enhanced by the sparkling pool, ideal for the family to enjoy in our warm highveld summer, while the wood fire in the formal lounge offers the warmth to cuddle around on the cooler winter days. A quaint bar separates the formal lounge from the bright, sunny family room, leading directly onto the pool area.

The well-appointed dining area leads directly into the wood and granite kitchen, boasting a pantry and eye-level oven. An interesting guest...

Features

Pets Allowed Yes

Interior

Bedrooms	5
Bathrooms	3.5
Recep. Rooms	3
Studies	1
Furnished	No

Exterior

Garages	3
Security	Yes
Pool	Yes
Views	No

Sizes

Floor Size	584m ²
Land Size	1,132m ²

Extras

30m2 Work from home with work station, Guest cloakroom, 5x Large Bedrooms, Carpet Floors, 2x Patio, Gas & Wood Burning Fireplace, Granite Counter-Tops, Wood Cabinetry, Double Oven, Space for Fridge, Space for 2x Appliances, Double & Tandem Garage, Undercover Bar