

## PRIME RESIDENTIAL REAL ESTATE

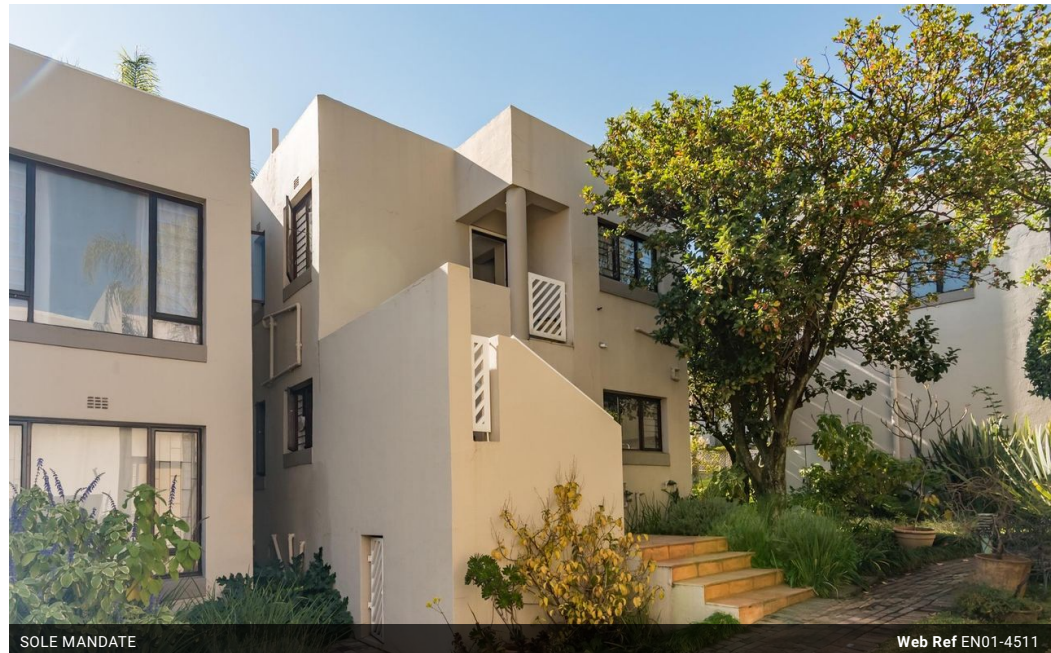


**Ronald Ennik**  
083 273 3707  
theparks@ennikestates.co.za

Contact Johannesburg (Ennik Estates)

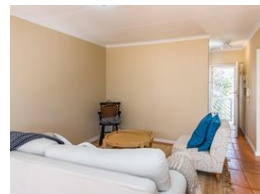
011 788 0688

65 Worcester Road  
Parkwood  
2193  
Johannesburg



SOLE MANDATE

Web Ref EN01-4511



# R820,000



**Monthly Bond Repayment** R8,324.88

Calculated over 20 years at 10.75% with no deposit.

**Transfer Costs** R28,244.00 **Bond Costs** R21,450.00

These calculations are only a guide. Please ask your conveyancer for exact calculations.

**Monthly Levy** R2,900 **Monthly Rates** R900

## Urban Elegance Meets Tranquil Retreat: Prime Apartment in Johannesburg's Heart

Discover the perfect blend of urban convenience and tranquil living with this exceptional apartment, situated in the heart of Johannesburg's bustling business district. Ideal for those seeking proximity to the city's dynamic lifestyle while enjoying the peace of a secure, quiet complex, this residence offers the best of both worlds.

Located just minutes away from world-class dining, premier entertainment, and a variety of cultural landmarks, this apartment places you at the epicenter of Johannesburg's vibrant offerings. Whether you are a connoisseur of fine cuisine, a lover of the arts, or an enthusiast of city life, this location caters to every lifestyle need.

The property also benefits from excellent transport links, ensuring seamless connectivity throughout the city. With such a prime location, getting...

## Features

Interior		Exterior		Sizes	
Bedrooms	1	Carports / Parkings	1	Floor Size	53m <sup>2</sup>
Bathrooms	1	Security	Yes		
Recep. Rooms	2	Pool	Yes		
Furnished	No	Views	No		

### Extras

Wifi/Fibre, Open-plan Dining Area, Wood Cabinetry, Dual Sink, Defy Appliances, Communal Garden, Carpet Floors, Aluminum Sliding Door, Burglar Bars, Security Gate, Tiled Walls, Tiled Floors, Wooden Shutters