

PRIME RESIDENTIAL
REAL ESTATE

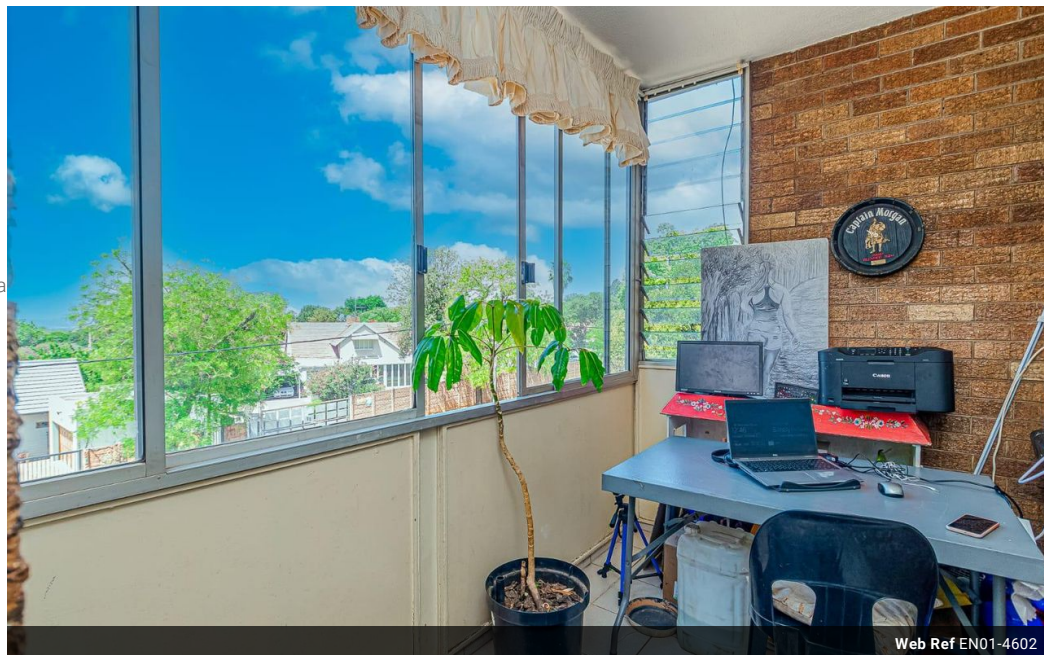

Charmaine Chatkin

082 625 3627

charmaine.chatkin@ennikestates.co.za

Contact Johannesburg (Ennik
Estates)

011 788 0688

65 Worcester Road
Parkwood
2193
Johannesburg


Web Ref EN01-4602



R660,000

3 1.5 1

Monthly Bond Repayment R6,700.51

Calculated over 20 years at 10.75% with no deposit.

Transfer Costs R23,730.00

Bond Costs R17,680.00

These calculations are only a guide. Please ask your conveyancer for exact calculations.

Monthly Levy R3,500

Excellent Value 3 Bedroom Apartment in Gresswold

In the often-overlooked enclave of Gresswold, Johannesburg, lies a rare confluence of practical urban living and verdant surroundings. This three-bedroom, first-floor flat presents a compelling proposition for families seeking both comfort and proximity to Johannesburg's commercial and educational nodes.

The apartment's layout is functionally elegant. Its parquet flooring evokes a mid-century solidity, while tiled surfaces in the kitchen, bathrooms, and water closet speak to ease of maintenance. A recently renovated full bathroom and a separate toilet support a household of modest scale with notable convenience.

The primary and secondary bedrooms—both generously proportioned and fully fitted with ample cupboard space—are matched by a versatile third bedroom adjacent to a well-lit open-plan living and dining...

Features

Pets Allowed	Yes		
Interior		Exterior	
Bedrooms	3	Garages	1
Bathrooms	1.5	Security	Yes
Recep. Rooms	2	Pool	No
Studies	1	Views	No
Furnished	No		

Extras

Heater, Tiled Floors, Small Pets Allowed with Permission, Parquet Floors

